

# Aviation Experience Summary

**Innovation Technology Partners** is an international survey support firm that provides detailed and accurate building information to the architectural, engineering and construction (AEC) communities. Utilizing advanced 3D laser scanning technology, our services provide timely information that minimizes errors, enables sound decision-making and helps to reduce overall construction costs.

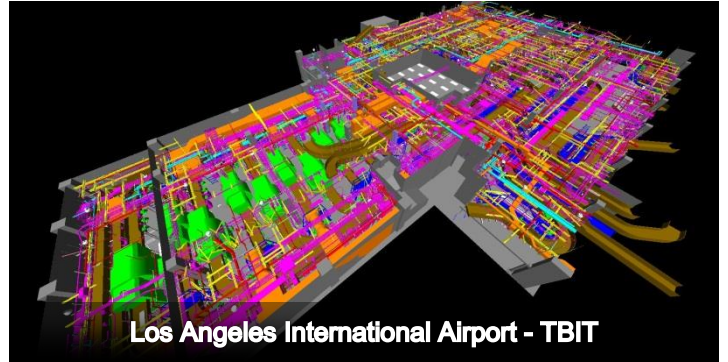
The advent of Building Information Modeling (BIM) technology provides an unprecedented level of control to the project team. Yet, this sophisticated tool relies heavily on the quality of the existing conditions information provided. InNovTec Revit and Navisworks deliverables provide the clear understanding of project variables that is critical for effective BIM coordination and conflict resolution. Our comprehensive workflow allows us to engage a project throughout its entire lifecycle and adapt to its changing needs.

Since 1999, our multi-disciplinary team has completed Terminal Renovation and Baggage Handling System projects in over forty airports nationwide making us the true market leader in aviation. We have a proven track record for navigating the unique challenges of complex baggage-handling systems and orchestrating our scanning efforts around the complex demands of airport operations. Below is a sampling of some of our more recent projects. Project references are available upon request.



**Dallas/Ft.Worth International Airport – Terminal A**

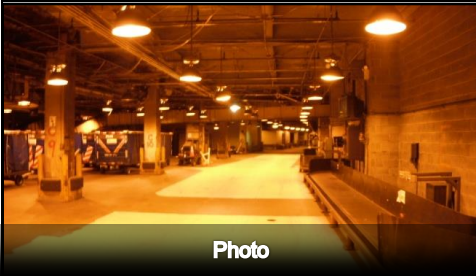
<b>Year:</b> 2012	Terminal A of Dallas/Ft. Worth International airport is undergoing an extensive renovation as part of the modernization program for terminals A,B,C and E. InNovTec was tasked with scanning of critical areas where new conveyor equipment will be installed. The purpose of which was to ensure that the design right-of-way would be clear of existing obstructions. Scanning operations in this space were particularly challenging as part of the scope of work is in an interstitial space up in the ceiling that is only 4-5 feet high.
<b>Client:</b> Logan Teleflex	
<b>Size:</b> 16,000 Sq.ft.	
<b>Field Time:</b> 2 Days	
<b>Processing:</b> 1 Week	
<b>Deliverable:</b> TruViews	



**Los Angeles International Airport - TBIT**

<b>Year:</b> 2012	The baggage-handling system of the Tom Bradley International Terminal at LAX is to be upgraded. The Bagroom is densely populated with building mechanical, electrical and plumbing elements making documentation challenging. InNovTec was consulted by the design team to provide an accurate existing conditions 3D model. The early application of this model will ensure that construction conflicts will be minimized and reduce risk to the customer.
<b>Client:</b> CAGE, Inc.	
<b>Size:</b> 32,000 Sq.ft.	
<b>Field Time:</b> 5 Days	
<b>Processing:</b> 4 Weeks	
<b>Deliverable:</b> TruViews AutoCAD & NavisWorks	

## LaGuardia Airport – C/D Connector CBIS



Photo



Scan



Model

**Year:** 2011

**Client:** CAGE, Inc.

**Size:** 15,000 sq.ft.

**Field Time:** 3 Days

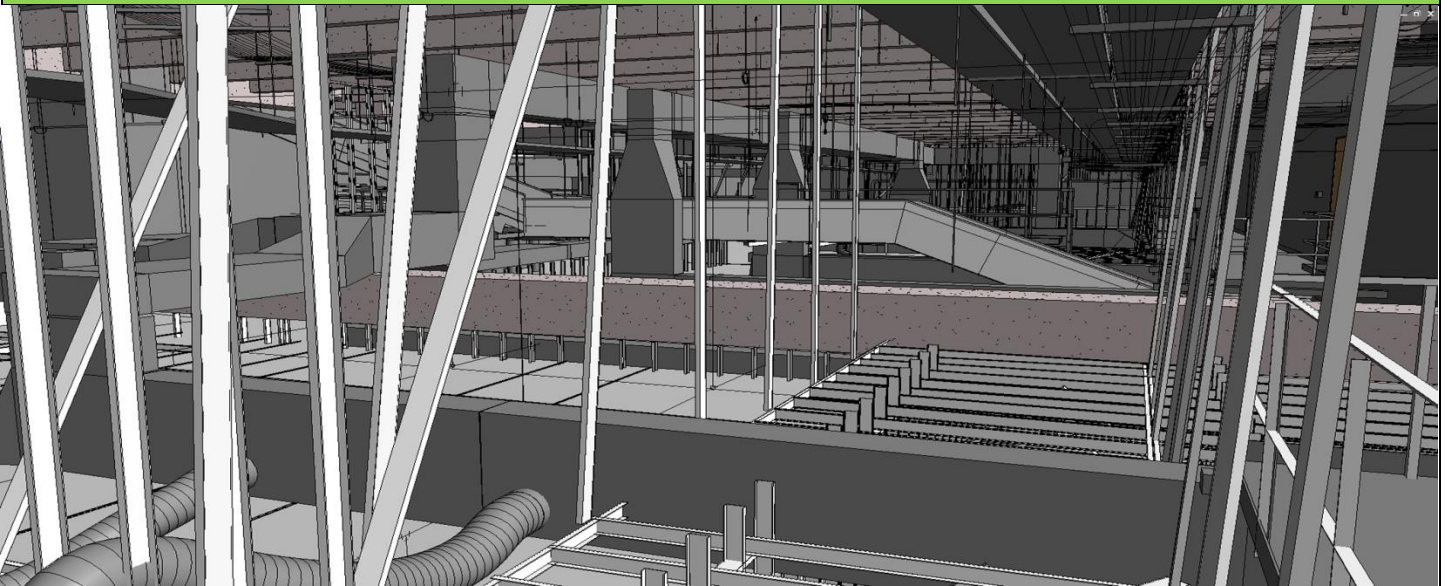
**Processing:** 2 Weeks

**Deliverable:** TruViews,  
AutoCAD & NavisWorks

InNovTec's multi-disciplinary team leveraged their vast experience with airport baggage-handling projects to develop a laser scanning workflow that would not only capture the existing MEP, but also provide enough detail to facilitate interaction with new conveyor equipment. The field crew systematically collected data at 40 locations throughout the 15,000 square-foot space. All individual scans were stitched together (registered) on-site to confirm the coverage area. The crew also established survey control points throughout the site to enable the application of the customer's survey control as well as future layout.

The TruViews gave engineers a quick and convenient way to visualize the space and verify dimensions while the model was being completed. The final model contained all objects above 1/4" in size, including the threaded rod supports for the conveyor and catwalk. Experience has taught the InNovTec team that details overlooked by some team members can be invaluable to others throughout the project's lifecycle.

## Palm Beach International Airport BHS Improvements



**Year:** 2012

**Client:** Whiting Turner

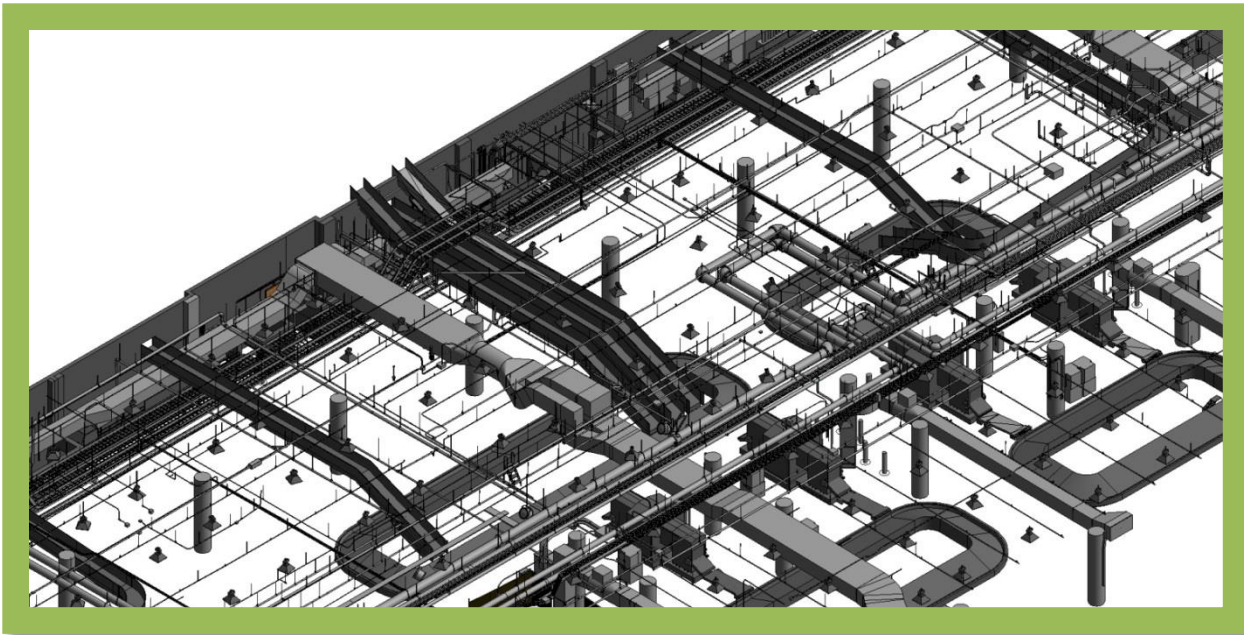
**Size:** 75,000 Sq.ft.

**Field Time:** 1 Week

**Processing:** 3.5 Weeks

**Deliverable:** TruViews & Revit

InNovTec was contracted by the General Contractor Whiting Turner to assist the Design/Build team to create an accurate as-built of the existing conditions in the baggage room and also seen above the interstitial spaces above the claims. This detailed 3D model would be used by Corgan for Architectural design and the BHS consultant Vic Thompson, to develop a clear right-of-way for the new conveyor. This would streamline the process once final design had begun and the manufacturer could install with confidence that potential obstructions had been accounted for. The model would also be used by the contractor to coordinate the relocation and newly installed mechanical, electrical and piping in support of the new system.



## Innovtec Staff Aviation Projects

**Toronto Pearson International Airport – Terminal One CATSA 3 Level Hold Baggage Screening Project - October 2013**  
**Orlando International Airport – Airside 4 – October 2013**  
**Orlando International Airport – W287 Ticket Lobby Modernization – October 2013**  
**Anchorage International Airport TSAIA Checked Baggage Recapitalization/Optimization Screening Design - September 2013**  
**Cleveland Hopkins International Airport In Line Baggage Screening Improvements - May 2013**  
**Miami International Airport - Central and South Terminal BHS Upgrades - May 2013**  
**McCarran International Airport - Terminal One BHS Upgrades - Las Vegas NV - April 2013**  
**Seattle Tacoma International Airport - Concourse D - North Satellite Project - March 2013 – April 2013**  
**Palm Beach International Airport BHS Improvements - October 2012 – May 2013**  
**Ft. Lauderdale International Airport Terminal 4 International Claims/CBP - September 2012 – October 2012**  
**LAX - Tom Bradley International Terminal Phase B3 - August 2012 – October 2012**  
**Orlando International Airport W-432 CBIS BHS - June 2012**  
**Dallas Ft. Worth International Airport - TRIP -Terminal A - March 2012 – April 2012**  
**LaGuardia Airport - C/D Connector - September 2011**  
**San Francisco International Airport - Terminal One - April 2011**  
**Orlando International Airport North Terminal Design Project - 2010**  
**San Francisco International Airport Terminal 3 Boarding Area E - 2010**  
**Ft. Lauderdale International Airport - Terminal 4 - 2010**  
**San Diego International Airport - Terminal 2 - 2009**  
**Ft. Lauderdale International Airport - Terminal One - 2009**  
**Philadelphia International Airport D/E Connector - 2009**  
**Love Field Modernization Project - Dallas, TX - 2009**  
**Philadelphia International Airport Terminal B/C - 2009**  
**Houston Bush (IAH) Terminal C 490K Project - 2008**  
**DFW Terminal A BHS Obstruction Analysis - 2008**  
**DFW Terminal E - 2008**  
**San Jose International Terminal A BHS - 2008**  
**Cincinnati International Airport BHS Obstruction Analysis – Delta Airlines - 2008**  
**Ted Stevens Anchorage International Airport Concourses A/B - 2008**  
**Orlando International Airport - BP-X019 - 2007**  
**Pittsburgh International Airport - PIT BHS Upgrades - 2007**  
**Seattle Tacoma Alaska Airlines BHS Renovation - 2006**  
**Hartsfield Jackson Atlanta International Airport - BHS Obstruction Analysis - 2006**  
**Orlando International Airport BP-X013 - 2005**  
**Minneapolis - St. Paul Intl (MSP) - 2020 Project - 2005**